



J.E. ADAMS INDUSTRIES OWNERS MANUAL

MODEL 28000-28003

- PAGE 2 PRODUCT INFORMATION
- PAGE 3 SPECIFICATIONS
- PAGE 3-4 IMPORTANT SAFETY INFORMATION
- PAGE 5 OPERATING INSTRUCTIONS
- PAGES 4-5 INSTALLATION
- PAGES 6-8 PROGRAMMING
- PAGE 8 CHANGING FLUIDS
- PAGE 8 MAINTENANCE
- PAGES 9 TROUBLESHOOTING
- PAGES 10-12 PARTS LIST
- PAGE 13-16 WIRE DIAGRAMS

PRODUCT INFORMATION

Please take a moment to fill out the information below in order to aid us with any future sales or service inquiries. Model number and serial number information can be found on the serial tag located inside the control box and/or on the lower exterior of the canister. Key number can be found on the tag that comes attached to the keys. There may be more than one key number depending on unit.

Please keep this information with your records.

MODEL#:_____

SERIAL#:_____

KEY NUMBER(S):_____

DATE PURCHASED:_____

DISTRIBUTOR:_____

**J.E. Adams Industries
1025 63rd Ave. S.W.
Cedar Rapids, IA 52404
1-800-553-8861
www.jeadams.com**

SPECIFICATIONS:

Unit specifications:

Voltage: 120V, 60Hz
Amperage: (1) 30 amp service is required for this unit
Weight: 368 lbs with pallet attached

Vac specifications:

Motors: (3) Ametek 120V motors
Fuses: (3) 10 amp inline fuses

Shampoo specifications:

Compressor: (1) Thomas 120V, 1/12th HP compressor
Peristaltic pump: (2) Thomas peristaltic pumps, 12VDC

Fragrance specifications:

Compressor: (1) Thomas 120V, 1/12th HP compressor
Peristaltic pump: (3) Thomas Peristaltic pumps, 12VDC

Air:

Compressor: (1) 3/4HP Twin head Thomas compressor

NOTE: "UNIT INTENDED FOR COMMECIAL USE ONLY"

IMPORTANT SAFETY INSTRUCTIONS

When using an electrical appliance, basic precautions should always be followed, including the following:

READ ALL INSTRUCTIONS BEFORE USING (THIS APPLIANCE)

WARNING – To reduce the risk of fire, electric shock, or injury:

- Do not use on wet surfaces.
- Use only as described in manual. Use only manufactures recommended attachments.
- Do not allow to be used as a toy. Close attention is necessary when used by or near children.
- Do not put any object into openings. Do not use with any opening blocked; keep free of dust, lint, hair and anything that may reduce air flow.

- Keep hair, loose clothing, fingers, and all parts of body away from openings and moving parts.
- Do not use to pick up flammable or combustible liquids, such as gasoline, or use in areas where they may be present.
- "Do not pick up anything that is burning or smoking, such as cigarettes, matches, or hot ashes."
- "DO not use without dust bag and/or filters in place."

SAVE THESE INSTRUCTIONS

Installation Instructions:

- Determine location to mount unit ("**DANGER**" **"THIS EQUIPMENT INCORPORATES PARTS SUCH AS SWITCHES, MOTORS, OR THE LIKE THAT TEND TO PRODUCE ARCS OR SPARKS THAT CAN CAUSE AN EXPLOSION. WHEN LOCATED IN GASOLINE-DISPENSING AND SERVICE STATIONS INSTALL AND USE AT LEAST 20 FEET (6 M) HORIZONTALLY FROM THE EXTERIOR ENCLOSURE OF ANY DISPENSING PUMP AND AT LEAST 18 INCHES (450 MM) ABOVE A DRIVEWAY OR GROUND LEVEL."**
- Run 30 amp service to that location (*NOTE UNIT HAS WIRE PROVIDED UNDERNEATH TO CONNECT INCOMING POWER SUPPLY*)
- **Grounding Instructions:** This appliance must be connected to a grounded metal, permanent wiring system; or an equipment-grounding conductor must be run with the circuit conductors and connected to the equipment-grounding terminal or lead on the appliance.
- Mount unit to location and use **FIG 1** for mount pattern
- If unit is vault ready configuration see **FIG 1** for mounting and **FIG 2** for vault tube location.

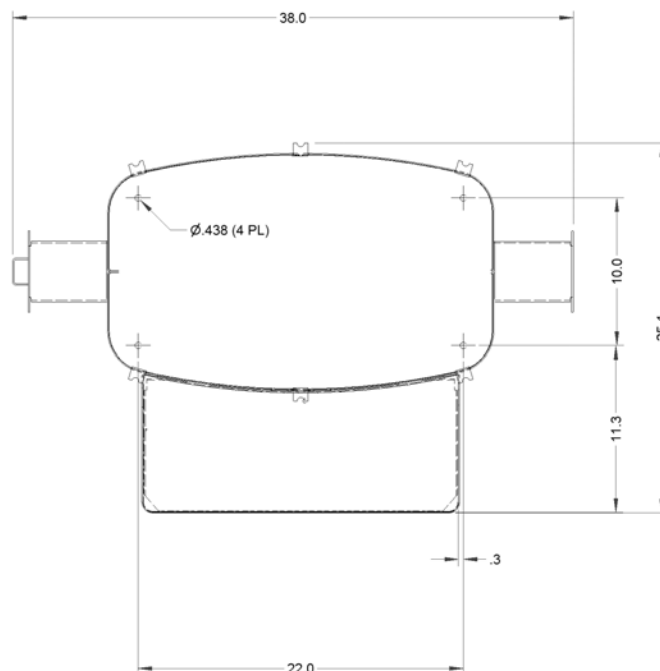
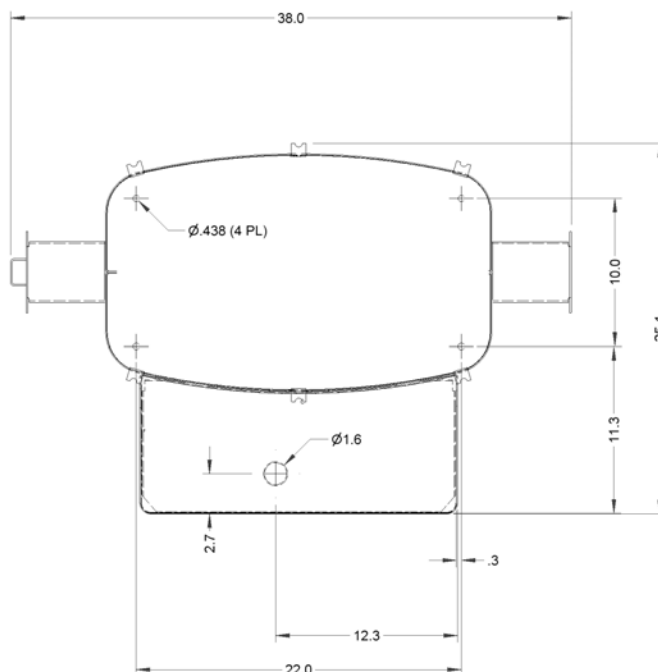


FIG 1

FIG 2



Operating Instructions:

- Once unit is installed and power is applied, open top door of unit and flip breaker switch to the on position.
- Program display either by hand held remote (Sold Separately) or by buttons located on the back of the display. It is recommended that a hand held programmer be purchased. Programmer is much faster than push button method. See section in manual called **Programming instructions** for proper set-up.
- Attach vacuum hose to unit.
- Fill scent bottles in lower compartment and insert the appropriate line into each bottle and screw on lid tightly. (Not applicable on all models)
- Insert the appropriate line into the shampoo and spot formula bottles and screw caps onto bottles tightly. (Not applicable on all models)
- Activate unit and make sure the vacuum works properly.
- Activate the air function and make sure it works properly. (Not applicable on all models)
- Activate the scent. When activated the scent it is best to run one fragrance until it starts to spray. Then repeat for each additional fragrance. This will ensure each line is primed and ready for use.
- Activate the shampoo/spot function. It is recommended that you run the shampoo function until the solution starts to exit the gun assembly. Repeat the same process for the spot remover as well. This will ensure that both lines are primed and ready for use.
- Attach any decals such as fragrance labels and price decals at this time.
- Unit should be ready for use.

Programming Instructions:

Coin acceptor:

- No programming to acceptor needed if unit was purchased with the standard Imomex Z32 electronic acceptor (8149-92 our part number). It is pre-programmed to accept US quarters, .984 tokens, US \$1 coin and 1.073 token. Acceptor is pre-programmed before it is sent to J.E. Adams.
- If different acceptor was purchased, see additional literature sent along with unit for programming info.

Bill acceptor:

- Bill acceptor comes pre programmed from J.E. Adams and should not require any changes. If additional programming is needed to acceptors please refer to additional literature sent along with this unit.

Display:

- Unit may be programmed when received depending on information given at that the time of order.
- To program follow the instructions below.

Display programming with remote:

Note 1:

28000 unit	28001 UNIT	28002 UNIT	28003 UNIT
A= VAC	A= VAC	A= VAC	A= VAC
B= TURBO	B= TURBO	B= TURBO	B= SHAMP/SPOT
C= SHAMP/SPOT	C= SHAMP/SPOT	C= SHAMP/SPOT	C= SCENT
D= AIR	D=SCENT		
E= SCENT			

- 1) Press the red power button.
- 2) Timer will display 0000. At this time type in 4 digit access code. Note code will be 1234 until changed by customer.
- 3) Once code has been entered display should read ok. If display does not read ok, repeat step 1 and 2.
- 4) Press **CH +** button. Timer will display coin value. This should read \$.25 and should not be changed.
- 5) Press the **CH +** button. Display will now read (**A: 30**) or may be a different time. (**A**) Will be the time per coin for the **A**. Set desired time per coin by using the **VOL -** to decrease or the **VOL +** to increase. Once time is entered move to next step.
- 6) Repeat step 5 for additional B thru F functions. (Not all functions applicable see NOTE 1 above.
- 7) Press the **CH +** button. Display will now read (on A). This is the number of coins to start **A**. Use the **VOL -** and **VOL +** to adjust. Once this is done press the **CH+** button and repeat for B thru F if applicable, see NOTE 1.

- 8) Press the **CH +** button. Display will read bonus time. Set if desired. See explanation at the end programming instructions.
- 9) Press the **CH +** button. Display will read debit mode. Set if desired. See explanation at the end programming instructions.
- 10) Press the **CH +** button. Display will read delayed start. Set if desired. See explanation at the end programming instructions.
- 11) Press the **CH +** button. Display will read **HLxx**. Set if desired. See explanation at the end programming instructions.
- 12) Press the **CH +** button. Display will read Restart off or Restart on depending on what is set. Restart off will require a person to put in full amount after unit is turned off to reactivate. Restart on allows for additional coins to be put in the machine to keep unit running. To set use **VOL –** or **VOL +** to change.
- 13) Press the **CH +** button. Display will now read **STD** or **USER** or **MIX**. To make a custom message use **VOL +** button to scroll to USER. At this point press and hold **CH +** button until original message appears. At this time you may change the message simply by using the **VOL –** or **VOL +** buttons to change letters. ***Once message has been entered you must put the symbol / at the end of message.*** This will tell display that this is the end of the message.
- 14) Press the **CH +** button now 5 more times to exit programming.
- 15) Unit should now be programmed.

Program definitions:

- Bonus time settings:
 - Amount of time set in bonus time is added to regular time per coin/pulse(e.g. if you want to give 45 seconds for bonus time and your regular time per coin is 30 seconds, you would set bonus time at 00:15)
 - Bonus is disabled by setting bonus time to 00:00.
 - If bonus time is set to less than one minute, bonus time is added when bonus coin is reached and every coin after that until time expires.
 - If bonus time is set at 1:00 or more, bonus will be a "one time" bonus. Bonus time will only be added for bonus coin or multiplies of bonus coin (e.g. 16th coin, 32nd coin, etc). Any other coin will receive regular time per coin.
 - If bonus time is set to 99:00, when bonus coin is deposited, timer will show "-on-" and timer will continue to run until coin switch wire is shorted to ground by a loop detector or other switch closure for a minimum of two seconds.

- Debit and credit mode:
 - Debit mode: As coins are deposited display shows "\$1.75 MORE, \$1.50 MORE, \$1.25 MORE" etc. until start price is reached. Once start price is reached display switches to time accumulating until no more coins have been deposited.
 - Credit mode: As coins are deposited display shows money accumulating (\$.25, \$.50, \$.75 etc). If timer is also set to delayed start mode timer will continue to show money accumulating until no more coins have been deposited. If timer is set to instant start, as soon as start price is reached, timer will change to time counting down.
 - Both mode: As coins are deposited display shows money accumulating (\$.25, \$.50, \$.75 etc). If start price is not reached, after 5 seconds timer will alternate between "add \$x.xx more" and amount of money already deposited.

Display programming with push button:

- Unit can be programmed using buttons that are located inside display. One is labeled **S2**, which is used to change from item to item. One is labeled **S1** which is used to set desired value. If you hold down **S1** this will cause numbers to decrease. If you repeatedly push **S1** numbers will increase.
- When programming with buttons use same instructions as remote except for the following. Where it says to press **CH +** use **S2** and where it says to use **VOL +** or **-** use **S1**.

Changing fluids:

- Disconnect power. Unscrew cap from empty bottle. Remove empty bottle. Insert new bottle into unit. Insert line into bottle and screw cap onto bottle. Reconnect power

Maintenance:

- Filter bags should be taken out weekly and shaken out. Also it might be a good idea to keep a new set of bags on hand so that once a month or longer you can take original bags out and wash them.
- Check vac hose for cracks on a weekly basis.
- Check shampoo and spot formula bottles to assure that they are full.
- Clean canister with a stainless steel cleaner as needed.
- Check motor brushes approx. every 3 months for excessive wear. Motor brushes should be changed if they are shorter than ¼". ***Disconnect power before doing this.***
- Check all shampoo lines and assembly for any signs of wear.
- All servicing of machine should be conducted by an authorized service representative.

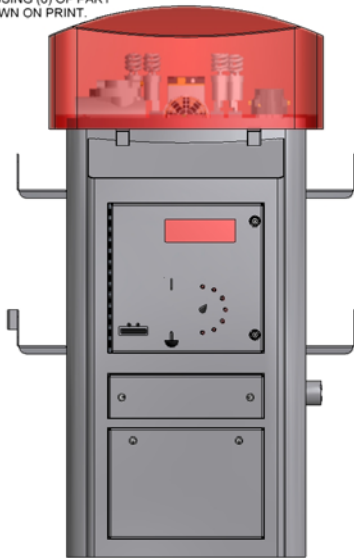
Troubleshooting:

DISCONNECT POWER BEFORE SERVICING

Problem	Possible cause	Solution
Unit is not powered	Breaker inside unit is not in the on position	Flip breaker on
Display is not powering	Breaker inside unit is not in the on position	Flip breaker on
	Check transformer inside main power box in unit. Is there 24VAC at output terminal?	Replace transformer (8131-2)
Display reads "fail"	Coin acceptor putting out continuous pulse	Press mode button on display. If fail does not go away replace coin acceptor. (8149-92)
	Program in display may be lost	Reprogram display. If fail goes away and then comes back, replace battery in display.
Unit keeps blowing my breaker from my incoming power source	Inadequate wire size supplied to machine	Call electrician and install proper wire size for 30amp service versus length or run.
	Wrong size breaker	Install correct breaker(only use wire size that is adequate to handle 30 amp breaker)
Fuses for vac motors keep blowing.	Inadequate wire size supplied to machine	Call electrician and install proper wire size for 30amp service versus length or run.
	Motor brushes may be bad or too short	Replace motor brushes (8055BR)
Unit has lost suction	Vac hose clogged	Clean out debris from vac hose
	Filter bags need cleaned	Clean out filter bags or replace (8076)
	Vac hose is damaged	Replace vac hose (2036)
	Cleanout door gaskets torn or worn	Replace gaskets (8159)
Unit has shut down For no apparent reason	This unit has a reset thermal limiter in the compressor. Unit may have shut down due to excessive heat	Turn off power to the machine and wait for a period of 5 minutes. Reapply power and activate machine.

PART NO. 28000

NOTE:
1) ATTACH DOME USING (6) OF PART 8921-7W. NOT SHOWN ON PRINT.



BILL OF MATERIALS				BILL OF MATERIALS			
ITEM	PART NUMB	DESCRIPTION	QTY	ITEM	PART NUMB	DESCRIPTION	QTY
60	8915B	DOVE, OVAL BLUE	1	1	1079-3	DOOR GASKET	179"
61	8920-4	OVAL DIRT BIN	1	2	1085	FLEX TRIM DOOR SEAL	6FT
62	8925	FLOURESCENT BULB	4	3	11000-15	SHAMPOO BRUSH ASSEMBLY	1
63	8939	VAC PALLET	1	4	11000-22	UNION FITTING 1/8"	1
64	8953	MEDECO CAM LOCK W/2 KEYS	4	5	11000-23	UNION FITTING 3/16"	1
65	8958-1	MEDECO SCREW LOCK	1	6	11000SPOT	SPOT REMOVER FORMULA	1
66	9500WIN	WINTER SHAMPOO FORMULA	1	7	2036	BLACK HOSE 2 x 15	1
68	B5996-010	10 AMP FUSE	3	8	2056-BLACK	BLACK CLAW	1
69	B5997-001	FUSE BASE	3	9	28000-153	WAGO TERMINAL JUMPER	9
70	8859	NEW CAR SCENT	1	10	28000-158	DECAL SET - CANISTER	1
71	8865	VANILLA SCENT	1	11	28000-1W	COMPLETE MULTIUNIT WELDMENT	1
72	8857	WILD CHERRY SCENT	1	12	28000-22W	BOTTOM DOOR WELDMENT	1
73	1009	COIN FUNNEL	1	13	28000-23W	COIN BOX ENTRY DOOR WELDMENT	1
74	8549-1	FLEX RELIEF	1	14	28000-24W	COIN BOX WELDMENT	1
76	5636D1	#10-24 PHIL. PAN HEAD SCREW	8	15	28000-36	MOTOR MOUNT	6
77	8921-11	CLAMP, WELD COMPLETE	6	16	28000-37A	COMPRESSOR ASSEMBLY	1
78	28000-50A-1	PUMP ASSEMBLY	1	17	28000-39W	LIGHT BRACKET WELDMENT	4
79	5639D9	ISOLATION MNT, 30 DUR NEOPRENE, 1/4-20	4	18	28000-40	PLASTIC CONTAINER	3
81	8597	5/16 WASHER	4	21	28000-51	FLEX TUBING	42 5"
82	5603D2	1/4 Std NC Nylock Nut	4	22	28000-53	NONMETALLIC TUBE FITTING	3
83	9859	3/4 HP TVIN HEAD THOMAS COMPRESSOR	1	23	28000-53B	SWIVEL CONNECTOR	1
84	5800D6	90 DEG. NPT STREET ELBOW	1	24	28000-85A	TOP TERMINAL STRIP ASSEMBLY	1
				25	28000-90A	RELAY CONTROL ASSEMBLY	1
				26	28000-91	COVER-RELAY CONTROL	1
				27	28000-92A	MAIN CONTROL ASSEMBLY	1
				28	28000-93	COVER- MAIN CONTROL	1
				29	28000-96A	AIR SOLENOID ASSEMBLY	2
				30	28000-99A	MAIN DOOR ASSEMBLY	1
				32	5601D6	1/4-20 x 1/2 HHCS-SS	12
				33	5606D2	1/4 WASHER	6
				37	5640D1	1/4-20 x 1/2 PHIL PAN HEAD SCREW	4
				38	5641D3	HHCS	4
				40	5901D4	ORANGE WIRE NUT	11
				41	5917D1	LAMP BASE	4
				42	5943C3220	16GA BLACK WIRE	172"
				43	5943C3225	16GA GREEN WIRE	73"
				44	5943E3220	12GA BLACK WIRE	43"
				45	5943E3229	12GA WHITE WIRE	24"
				46	7122-RV1	NORGREN VALVE	1
				47	8000-24	5 PIN MALE CONNECTOR	3
				48	8055	MOTOR, AMETEK 115V	3
				49	8057	MOTOR GASKET	3
				50	8076	FILTER BAG	4
				51	8084	WIRE TIE	30
				52	8108	#10 x 1/2 TAP SCREW	6
				53	8532-25	AIR HOSE 25FT	1
				54	8533-10	WHIP ASSEMBLY	1
				55	8596	NUT	4
				56	8597	WASHER	4
				57	8598	5/16 LOCK WASHER	6
				59	8898-1	SCENT HOSE ASSEMBLY	1

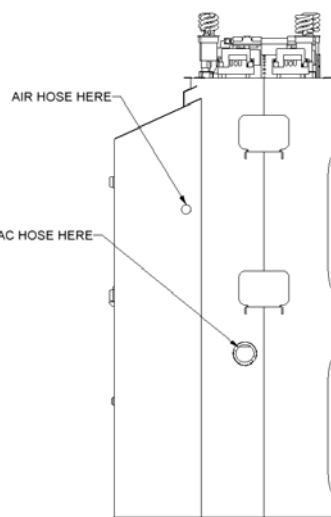
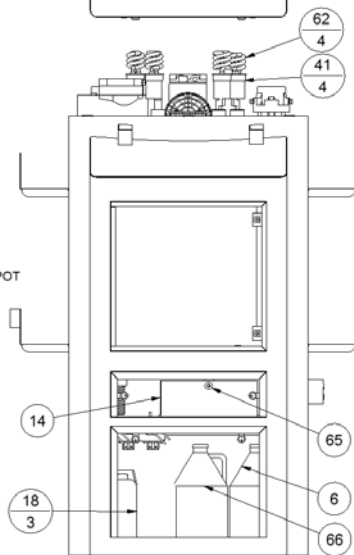
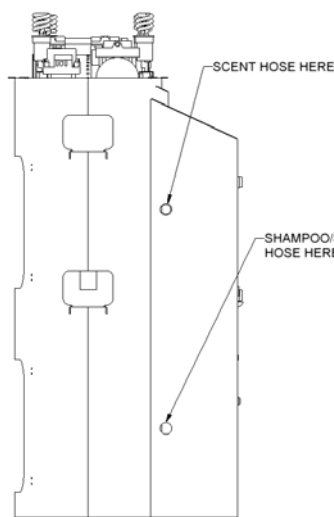
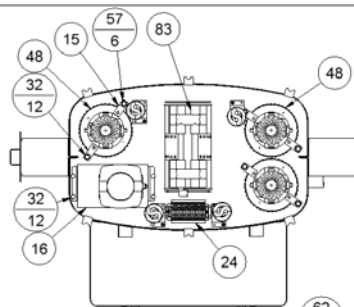
I	5225	REMOVED 9857, (4) 8036 AND 958-1A; ADD 9859 AND 5800D6	6-09	CK
H	4749	REMOVED 8915 AND ADDED 8915B	8-08	CK
G	4029	REMOVED (4) 5632D5, (4) 5603D3 AND (4) 5639D3 ADDED (4) 5639D9, (4) 5603D2, (4) 8597 AND (4) 8036	12-07	CK
F	3815	RECONSTRAINED COMPNONETS IN PART MODEL, TOP OF UNIT	6-07	CK
A	3644	REMOVED 28000-50A AND ADDED 28000-50A-1	4-07	CK
D	3109	REMOVED (16) 5647D8 RIVETS; ADDED (8) 5636D1 #10-24 SCREWS	8-06	CK
C	2955	ADDED PURGE SOLENOID TO AIR LINE	6/06	CAI
B	2829	REMOVED 8898 AND ADDED 8898-1 AND 8549-1	5-06	CK
A	2483	ADDED 1009 TO BILL OF MATERIAL	10-05	CK
REV	NO.	DESCRIPTION	DATE	BY

THIS DOCUMENT SHALL NOT BE REPRODUCED NOR SHALL THE INFORMATION THEREIN BE USED BY OR DISCLOSED TO OTHERS EXCEPT AS AUTHORIZED BY J.E. ADAMS INDUSTRIES

SHEET 1 OF 6

TITLE			
MULTI UNIT ASSEMBLY			
UNSPECIFIED TOLERANCES	MATERIAL	SCALE	INCH
1 PL ± .030	SCALE	INCH	
2 PL ± .010	DRAWN BY	ChadK	
3 PL ± .003	DATE	3/29/2004	
ANGLE ± 1.0°	PART NO.	28000	REV. I

PART NO. 28000

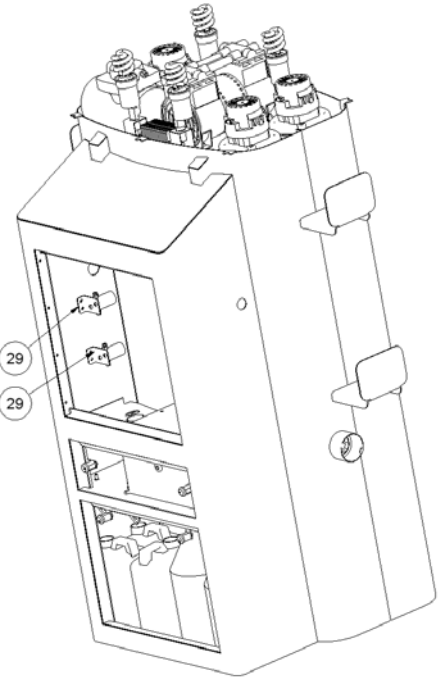
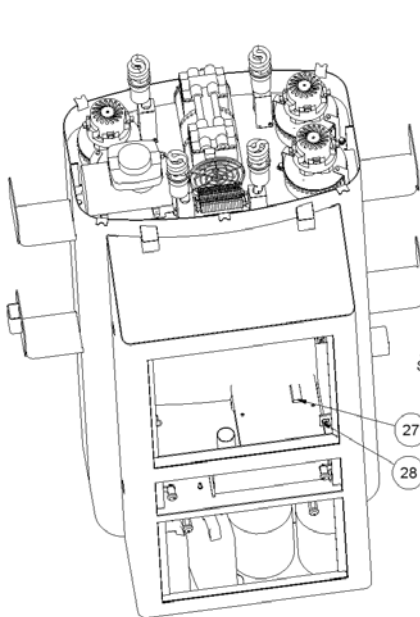
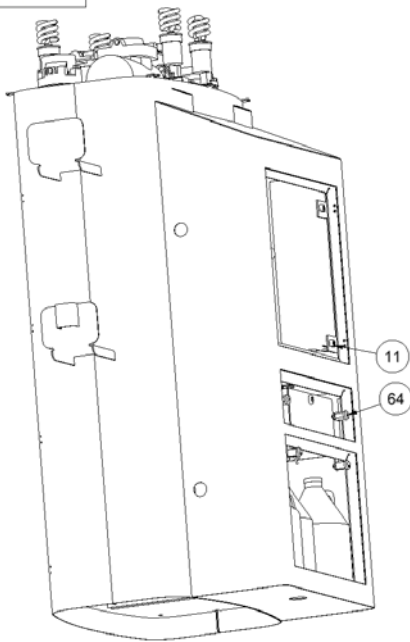


REV	NO.	DESCRIPTION	DATE	BY

THIS DOCUMENT SHALL NOT BE REPRODUCED NOR SHALL THE INFORMATION THEREIN BE USED BY OR DISCLOSED TO OTHERS EXCEPT AS AUTHORIZED BY J.E. ADAMS INDUSTRIES

SHEET 2 OF 6

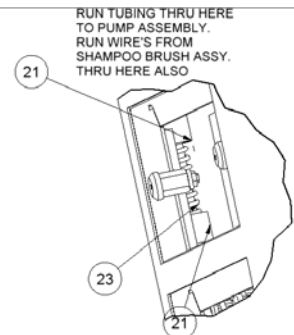
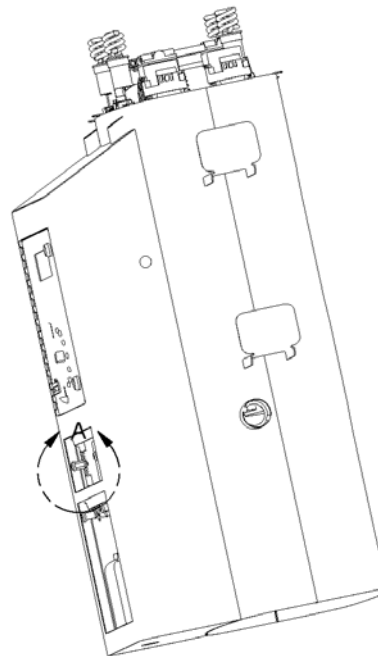
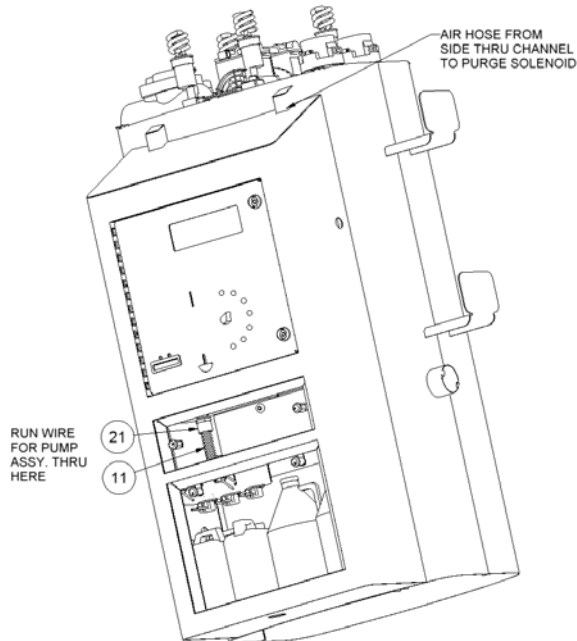
TITLE			
MULTI UNIT ASSEMBLY			
UNSPECIFIED TOLERANCES	MATERIAL	SCALE	INCH
1 PL ± .030	SCALE	INCH	
2 PL ± .010	DRAWN BY	ChadK	
3 PL ± .003	DATE	3/29/2004	
ANGLE ± 1.0°	PART NO.	28000	REV. I



REV	NO.	DESCRIPTION	DATE	BY
THIS DOCUMENT SHALL NOT BE REPRODUCED NOR SHALL THE INFORMATION THEREIN BE USED BY OR DISCLOSED TO OTHERS EXCEPT AS AUTHORIZED BY J.E. ADAMS INDUSTRIES				

SHEET 3 OF 6

TITLE		MULTI UNIT ASSEMBLY	
UNSPECIFIED TOLERANCES		MATERIAL	CEDAR RAPIDS, IOWA
1 PL ± .030	SCALE	INCH	
2 PL ± .010	DRAWN BY	ChadK	
3 PL ± .003	DATE	3/29/2004	
ANGLE ± 1.0°	PART NO.	28000	
			REV. I

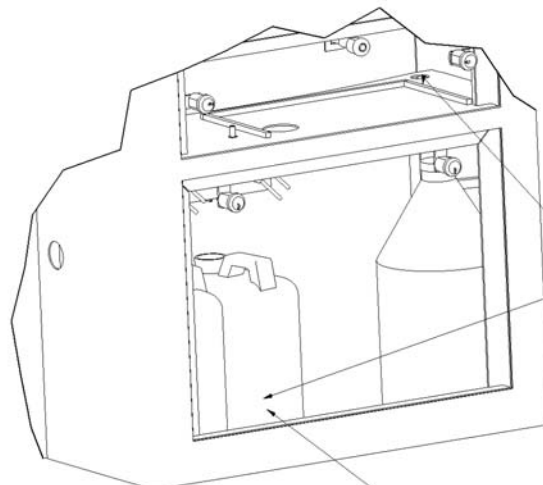
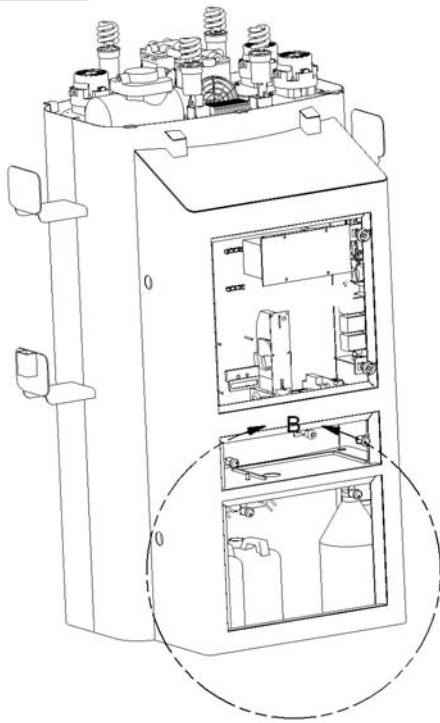


DETAIL A
SCALE 0.35 : 1

REV	NO.	DESCRIPTION	DATE	BY
THIS DOCUMENT SHALL NOT BE REPRODUCED NOR SHALL THE INFORMATION THEREIN BE USED BY OR DISCLOSED TO OTHERS EXCEPT AS AUTHORIZED BY J.E. ADAMS INDUSTRIES				

SHEET 4 OF 6

TITLE		MULTI UNIT ASSEMBLY	
UNSPECIFIED TOLERANCES		MATERIAL	CEDAR RAPIDS, IOWA
1 PL ± .030	SCALE	INCH	
2 PL ± .010	DRAWN BY	ChadK	
3 PL ± .003	DATE	3/29/2004	
ANGLE ± 1.0°	PART NO.	28000	
			REV. I

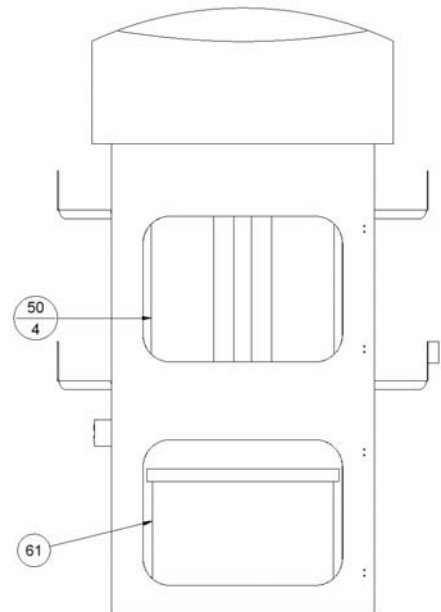
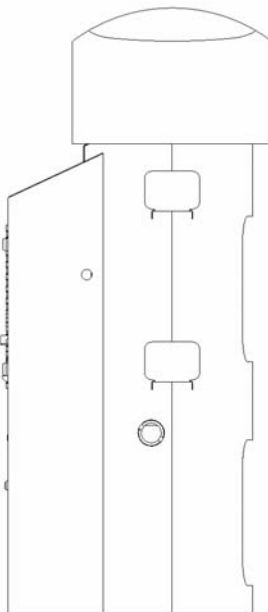
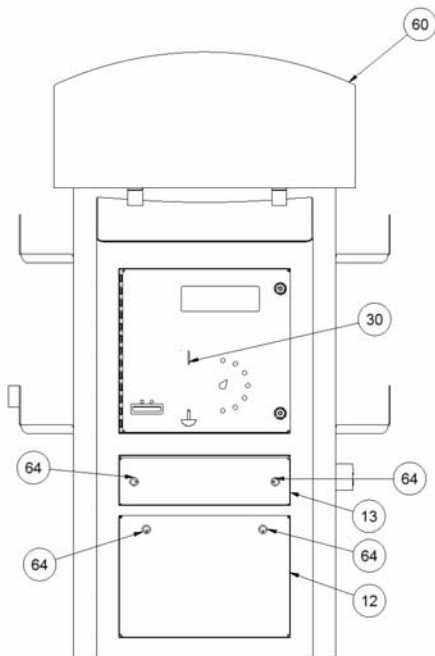


DETAIL B
SCALE 0.24 : 1

REV	NO.	DESCRIPTION	DATE	BY
THIS DOCUMENT SHALL NOT BE REPRODUCED NOR SHALL THE INFORMATION THEREIN BE USED BY OR DISCLOSED TO OTHERS EXCEPT AS AUTHORIZED BY J.E. ADAMS INDUSTRIES				

SHEET 5 OF 6

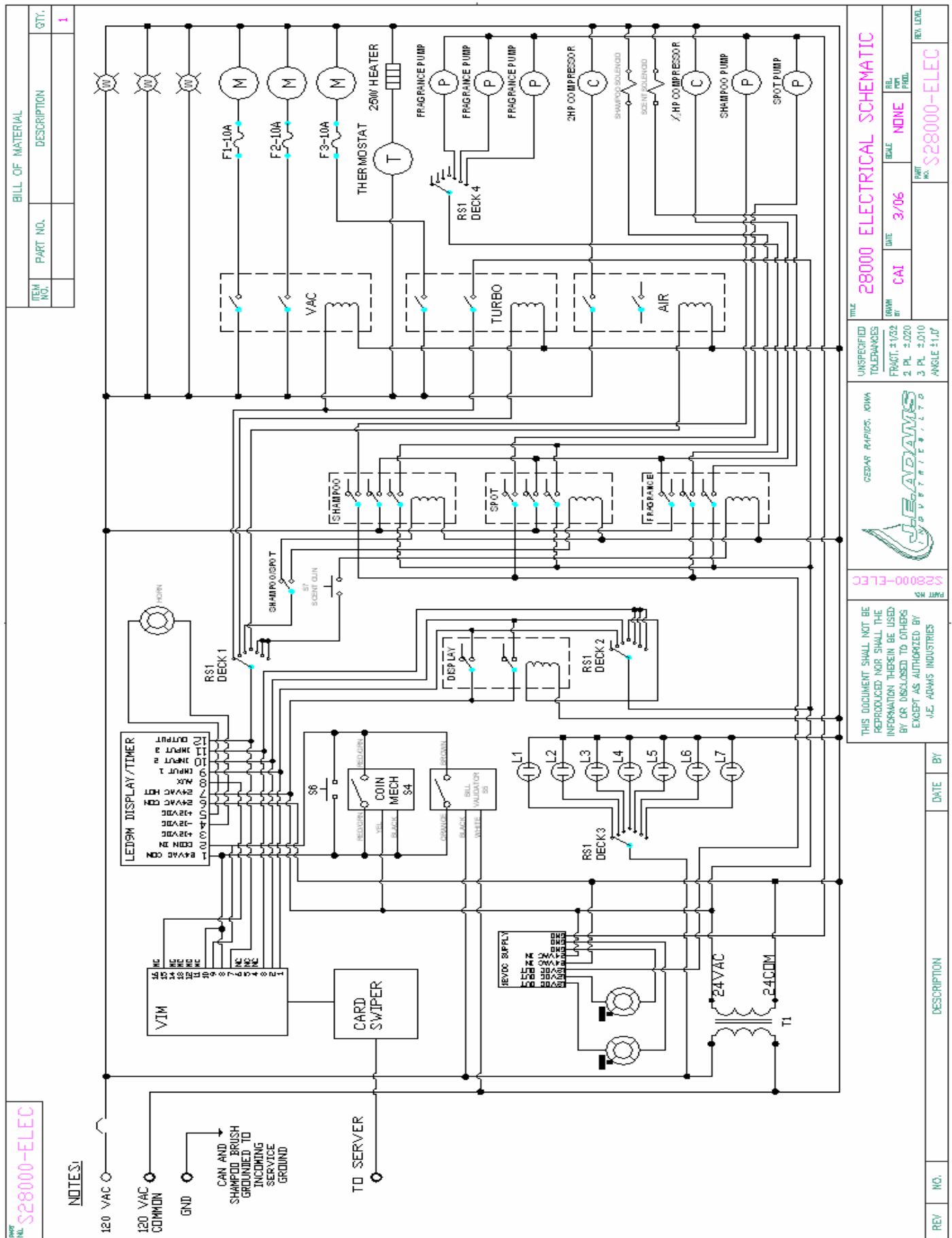
TITLE MULTI UNIT ASSEMBLY				
UNSPECIFIED TOLERANCES 1 PL ± .030 2 PL ± .010 3 PL ± .003 ANGLE ± 1.0°	MATERIAL	CEDAR RAPIDS, IOWA		
	SCALE	INCH		
	DRAWN BY	ChadK		
	DATE	3/29/2004		
	PART NO.	28000		
				REV. 1



REV	NO.	DESCRIPTION	DATE	BY
THIS DOCUMENT SHALL NOT BE REPRODUCED NOR SHALL THE INFORMATION THEREIN BE USED BY OR DISCLOSED TO OTHERS EXCEPT AS AUTHORIZED BY J.E. ADAMS INDUSTRIES				

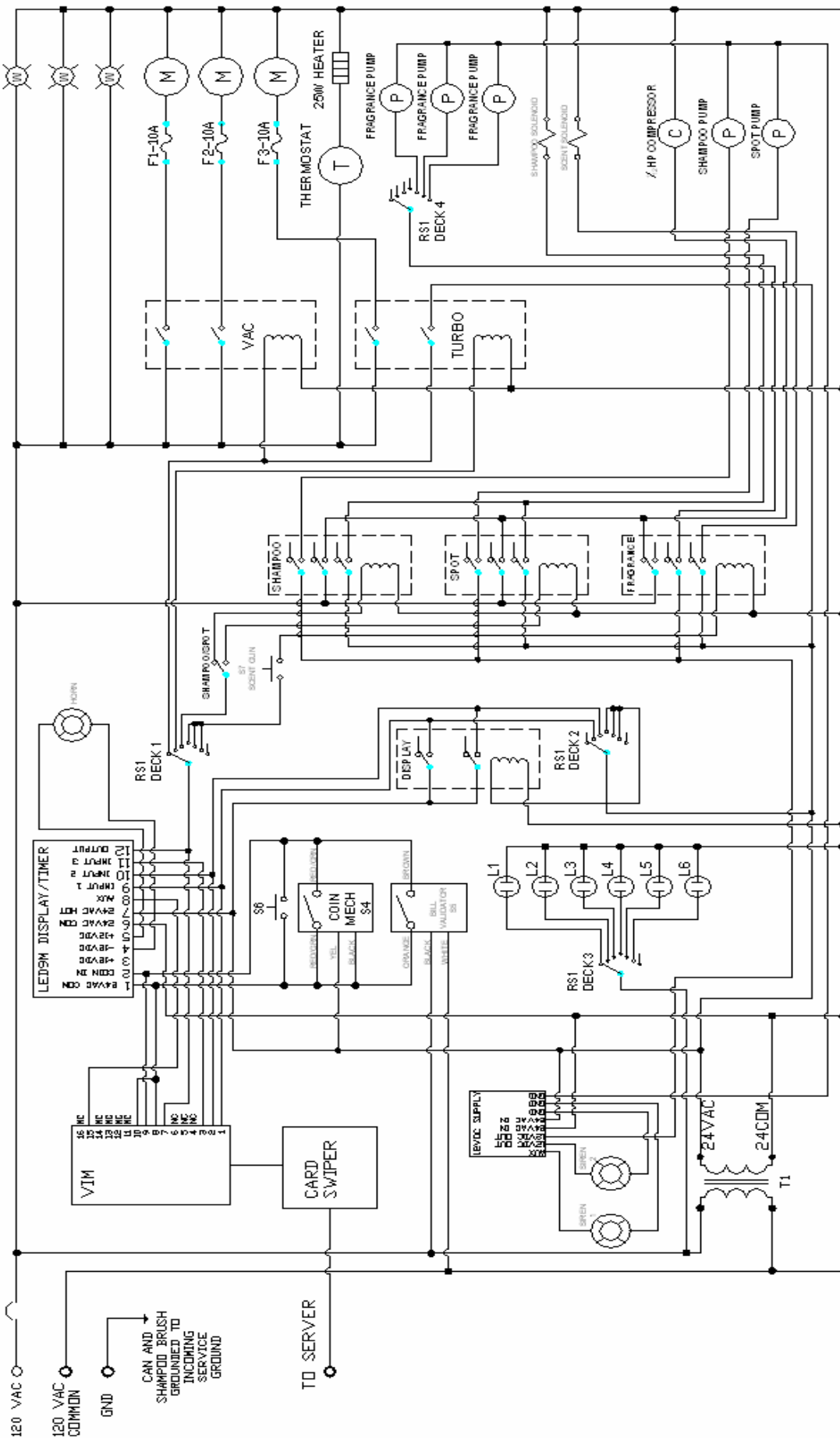
SHEET 6 OF 6

TITLE MULTI UNIT ASSEMBLY				
UNSPECIFIED TOLERANCES 1 PL ± .030 2 PL ± .010 3 PL ± .003 ANGLE ± 1.0°	MATERIAL	CEDAR RAPIDS, IOWA		
	SCALE	INCH		
	DRAWN BY	ChadK		
	DATE	3/29/2004		
	PART NO.	28000		
				REV. 1



BILL OF MATERIAL		
ITEM NO.	PART NO.	DESCRIPTION
1		

NOTES:



THIS DOCUMENT SHALL NOT BE REPRODUCED NOR SHALL THE INFORMATION THEREIN BE USED BY OR DISCLOSED TO OTHERS EXCEPT AS AUTHORIZED BY J.E. ADAMS INDUSTRIES



S28001-ELEC

28001 ELECTRICAL SCHEMATIC

UNSPECIFIED TOLERANCES
FRACT. ±1/32
2 PL. ±.020
3 PL. ±.010
ANGLE ±1.0°

DATE 3/06
BY CAI
REV. NO. S28001-ELEC

REV. NO.

DATE

BY

DESCRIPTION

REV. NO.

DATE

BY

DESCRIPTION

REV. NO.

DATE

BY

DESCRIPTION

REV. NO.

DATE

BY

DESCRIPTION

REV. NO.

DATE

BY

DESCRIPTION

REV. NO.

DATE

BY

DESCRIPTION

REV. NO.

DATE

BY

DESCRIPTION

REV. NO.

DATE

BY

DESCRIPTION

REV. NO.

DATE

BY

DESCRIPTION

REV. NO.

DATE

BY

DESCRIPTION

REV. NO.

DATE

BY

DESCRIPTION

REV. NO.

DATE

BY

DESCRIPTION

REV. NO.

DATE

BY

DESCRIPTION

REV. NO.

DATE

BY

DESCRIPTION

REV. NO.

DATE

BY

DESCRIPTION

REV. NO.

DATE

BY

DESCRIPTION

REV. NO.

DATE

BY

DESCRIPTION

REV. NO.

DATE

BY

DESCRIPTION

REV. NO.

DATE

BY

DESCRIPTION

REV. NO.

DATE

BY

DESCRIPTION

REV. NO.

DATE

BY

DESCRIPTION

REV. NO.

DATE

BY

DESCRIPTION

REV. NO.

DATE

BY

DESCRIPTION

REV. NO.

DATE

BY

DESCRIPTION

REV. NO.

DATE

BY

DESCRIPTION

REV. NO.

DATE

BY

DESCRIPTION

REV. NO.

DATE

BY

DESCRIPTION

REV. NO.

DATE

BY

DESCRIPTION

REV. NO.

DATE

BY

DESCRIPTION

REV. NO.

DATE

BY

DESCRIPTION

REV. NO.

DATE

BY

DESCRIPTION

REV. NO.

DATE

BY

DESCRIPTION

REV. NO.

DATE

BY

DESCRIPTION

REV. NO.

DATE

BY

DESCRIPTION

REV. NO.

DATE

BY

DESCRIPTION

REV. NO.

DATE

BY

DESCRIPTION

REV. NO.

DATE

BY

DESCRIPTION

REV. NO.

DATE

BY

DESCRIPTION

REV. NO.

DATE

BY

DESCRIPTION

REV. NO.

DATE

BY

DESCRIPTION

REV. NO.

DATE

BY

DESCRIPTION

REV. NO.

DATE

BY

DESCRIPTION

REV. NO.

DATE

BY

DESCRIPTION

REV. NO.

DATE

BY

DESCRIPTION

REV. NO.

DATE

BY

DESCRIPTION

REV. NO.

DATE

BY

DESCRIPTION

REV. NO.

DATE

BY

DESCRIPTION

REV. NO.

DATE

BY

DESCRIPTION

REV. NO.

DATE

BY

DESCRIPTION

REV. NO.

DATE

BY

DESCRIPTION

REV. NO.

DATE

BY

DESCRIPTION

REV. NO.

DATE

BY

DESCRIPTION

REV. NO.

DATE

BY

DESCRIPTION

REV. NO.

DATE

BY

DESCRIPTION

REV. NO.

DATE

BY

DESCRIPTION

REV. NO.

DATE

BY

DESCRIPTION

REV. NO.

DATE

BY

DESCRIPTION

REV. NO.

DATE

BY

DESCRIPTION

REV. NO.

DATE

BY

DESCRIPTION

REV. NO.

DATE

BY

DESCRIPTION

REV. NO.

DATE

BY

DESCRIPTION

REV. NO.

DATE

BY

DESCRIPTION

REV. NO.

DATE

BY

DESCRIPTION

REV. NO.

DATE

BY

DESCRIPTION

REV. NO.

DATE

BY

DESCRIPTION

REV. NO.

DATE

BY

DESCRIPTION

REV. NO.

DATE

BY

DESCRIPTION

REV. NO.

DATE

BY

DESCRIPTION

REV. NO.

DATE

BY

DESCRIPTION

REV. NO.

DATE

BY

DESCRIPTION

REV. NO.

DATE

BY

DESCRIPTION

REV. NO.

